

Hotels in the Northwest

Fjord Norway



VISIT
NORTHWEST



ÅLESUND
Sunnmøre

A part of
Fjord
Norway



Hotel Aak

Explore Hotel Aak in Romsdalen – a historical hotel with modern amenities and a scenic location.

Embracing the philosophy of "travel less, experience more," Hotel Aak has made a conscious choice for greener travel: stay for a minimum of two nights, immerse in local experiences, and contribute to a smaller environmental footprint. Find tranquility, recharge, and embrace the Aak atmosphere. Join short-travelled Romsdal adventures, savor local cuisine, and act sustainably: reuse towels to save the environment.

[Read more](#)

Contact: booking@hotelaak.no



FROM AIRPORT	ROOMS	BEDS	MEETING SPACE	MEETING CAPACITY	BANQUET	EXHIBITION M²	PARKING
MOL 60 km	16	33	2	-	-	TBA	Private



Grand Hotel

by Classic Norway Hotels

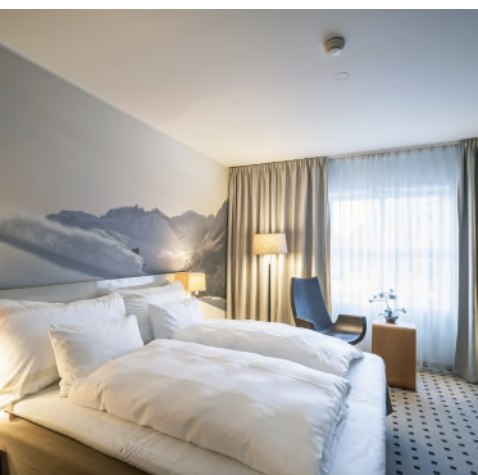
Situated in the heart of Åndalsnes, at the foot of the Romsdalseggen ridge, the hotel has been a popular destination for tourists from around the world for many years, thanks to its dramatic natural surroundings. The history of the hotel dates back to 1890. Since then, it has undergone several transformations, including reconstruction after a fire.

Comfortable rooms with views

The hotel offers 88 rooms, including single and double rooms, as well as suites, all with views of the Romsdalsfjord and Romsdal mountains. The rooms are bright and uniquely decorated with photo wallpapers.

[Read more](#)

Contact: post@grandhotel.no



FROM AIRPORT

MOL
55 km

ROOMS

88

BEDS

-

MEETING SPACE

5

MEETING
CAPACITY

-

BANQUET

-

EXHIBITION
M²

TBA

PARKING

Public

VISIT
NORTHWEST



A part of
Fjord
Norway



Frich's Ekspress Hotel Åndalsnes

Convenient self-check hotel in Åndalsnes

Frich's Ekspress Hotel offers 19 modern rooms located on the 2nd floor of Alti Shopping Center in Rauma. Stay close to the big attractions like the Trollstigen, Romsdalseggen and Rampestreken viewpoint. Sleep well in a quality Wonderland bed with a mountain view.

All rooms feature TVs and Wonderland beds, ensuring a comfortable stay, with easy access to Åndalsnes' top attractions and activities.

Ample parking and flexible dining

The hotel provides free parking and no on-site restaurant, but nearby dining options at Alti Rauma cater to varied tastes.

[Read more](#)

Contact: andalsnes@frich.no



FROM AIRPORT	ROOMS	BEDS	MEETING SPACE	MEETING CAPACITY	BANQUET	EXHIBITION M²	PARKING
MOL 60 km	19	-	-	-	-	TBA	Private





Rosvang Gaard

Farm hotel

Farm hotel

Rosvang Gaard is a farm hotel, lying by the shores of the Rødven Fjord with stunning views over the surrounding scenery, midway between Molde and Åndalsnes.

Discover famous sites like Trollstigen road, the Romsdals gondola, and the Romsdalseggen ridge hiking trail near Rosvang Gaard.

Easy transport

Located 27 km from Molde, including a brief ferry crossing, Rosvang Gaard provides transport to the airport, rail terminus, and local destinations.

[Read more](#)

Contact: post@rosvang.no



FROM AIRPORT

MOL
40 km

ROOMS

10

BEDS

18

MEETING SPACE

-

MEETING
CAPACITY

-

BANQUET

-

EXHIBITION
M²

TBA

PARKING

Public

VISIT
NORTHWEST

ÅLESUND
Sunnmøre

A part of
Fjord
Norway



Molde Fjordhotel

by Classic Norway Hotels

By the sea in the heart of Molde

Molde Fjord Hotel offers a cozy and welcoming atmosphere right by the seaside in central Molde. With 60 bright and comfortable rooms – many featuring verandas with stunning views of the Romsdalsfjord – it's the perfect place to relax.

Enjoy delicious dining at the popular Restaurant Hav or unwind at the vine bar. The hotel also provides excellent facilities for meetings and events, with six meeting rooms and the versatile Rosehagen venue.

As part of Classic Norway, the hotel offers a variety of maritime activities for an unforgettable stay by the fjord.

[Read more](#)

Contact: post@moldefjordhotell.no



FROM AIRPORT

MOL
6 km

ROOMS

60

BEDS

-

MEETING SPACE

5

MEETING
CAPACITY

-

BANQUET

-

EXHIBITION
M²

TBA

PARKING

Private

VISIT
NORTHWEST
■■■

ÅLESUND
Sunnmøre

A part of
Fjord
Norway



Thon Hotel Moldefjord

Comfort in the heart of Molde

Thon Hotel Moldefjord is a charming bed & breakfast hotel perfectly located in central Molde, just steps from the fjord. Guests are welcomed by a warm atmosphere, friendly staff, and modern amenities, including free Wi-Fi, access to a fitness center, and parking (when available).

Enjoy stunning views of the "Molde Panorama" with its 222 snow-capped peaks. On-site, Egon Restaurant offers an extensive menu and generous opening hours, while the cozy lobby bar and open-air seating provide perfect spots to unwind.

Fully renovated in 2019, Thon Hotel Moldefjord combines comfort, convenience, and breathtaking scenery.

[Read more](#)

Contact: moldefjord@olavthon.no



FROM AIRPORT	ROOMS	BEDS	MEETING SPACE	MEETING CAPACITY	BANQUET	EXHIBITION M²	PARKING
MOL 5 km	-	-	121				



Scandic Seilet

A Landmark by the Romsdalsfjord

Scandic Seilet Hotel in Molde is Northwest Norway's most spectacular hotel, known for its striking architecture and breathtaking views of the Romsdal Alps with 222 summits over 1000 meters above sea level.

Centrally located in Molde, the hotel is within walking distance of local attractions and perfectly positioned for exploring the stunning nature of Møre and Romsdal. Amenities include a cozy lobby with a 24-hour shop, a seasonal bar, dining for groups, and access to Molde Water Park, Bris Fitness Center, and Seilet Spa.

An eco-labeled hotel, Scandic Seilet combines comfort, sustainability, and unforgettable views.

[Read more](#)

Contact: seilet@scandichotels.com



FROM AIRPORT	ROOMS	BEDS	MEETING SPACE	MEETING CAPACITY	BANQUET	EXHIBITION M²	PARKING
MOL 7 km	224	-	10	-	TBA	-	Public





Scandic Alexandra Molde

Where history meets the fjord

Scandic Alexandra Molde is a centrally located hotel with stunning views of the 222 summits of the Molde Panorama. Established in 1883, the hotel combines historical charm with modern comfort, offering 165 rooms – 120 with balconies and fjord views.

Guests can enjoy breakfast in the charming "Stuene," where the hotel's historical atmosphere shines. The hotel is perfect for exploring Molde, hosting events, or attending conferences.

Conveniently located near the Hurtigruten quay, the hotel also offers parking and is just 6 km from Molde Airport. Explore nearby attractions like Varden, Romsdalsmuseet, and the Atlantic Road for a memorable stay.

Scandic Alexandra Molde is proudly Nordic Swan Ecolabel-certified.

[Read more](#)

Contact: alexandramolde@scandichotels.com



FROM AIRPORT	ROOMS	BEDS	MEETING SPACE	MEETING CAPACITY	BANQUET	EXHIBITION M²	PARKING
MOL 6 km	165	-	14	-		TBA	Private



Hustavika Havhotell

by Classic Norway Hotels

Hustadvika Havhotell is located on Storholmen, between Bud and the Atlantic Road, just 45 minutes from Molde. The hotel is set by a dramatic sea stretch, where coastal pantries and workplaces have been since the Ice Age.

Flexible accommodation

Guests can choose between hotel rooms, apartments with verandas, or cozy sea houses featuring multiple bedrooms and kitchens.

The hotel is near the sandy beach Farstadsanden, the fishing village Bud, popular mountain hikes like Trollkyrkja and Melen, and the Norwegian Scenic Route Atlantic Road.

Seasonal restaurant

The restaurant operates in summer, with availability upon request during other seasons, offering a "liquor sale" with storytelling and a sauna.

[Read more](#)

Contact: post@hustadvika.no



FROM AIRPORT	ROOMS	BEDS	MEETING SPACE	MEETING CAPACITY	BANQUET	EXHIBITION M²	PARKING
MOL 39 km	29	-	6	80	-	TBA	Private





Håholmen Havstuer

by Classic Norway Hotels

Authentic fishing village at Håholmen

Håholmen, an island by the Atlantic Road, offers a unique glimpse into history. Stay in charming houses from the 17th and 18th centuries and enjoy traditional food such as clipfish. This historical island, formerly a community based on trade, fishing, and maritime transport, is now a popular destination for accommodation, meetings, and events.

Comfortable rooms and local delicacies

Håholmen offers 47 unique rooms, each with its own character. Blending rustic charm with modern comforts, you can relax and enjoy the island's peaceful atmosphere.

[Read more](#)

Contact: post@haholmen.no



FROM AIRPORT	ROOMS	BEDS	MEETING SPACE	MEETING CAPACITY	BANQUET	EXHIBITION M²	PARKING
KSU 40 km	47	-	5	100	-	TBA	Public



Sveggvika Guesthouse

Sveggvika guesthouse is located on the idyllic island Averøy at the coast of Nordmøre where Kristiansund is the biggest city. The guesthouse is a restored clipfish factory from the beginning of the 1900. The guesthouse is lying right by the edge of the sea, providing its guests with a fantastic views whichever way one might look.

Studio appartmets with sea view

Sveggvika guesthouse offers bright and furnished studios with rustic charm and a beautiful view over the sea. The renovated fishing factory is guaranteed to give you a feeling of what it was like during the olden days. All the rooms are equipped with kitchenware and bathroom with shower.

[Read more](#)

Contact:
post@sveggvika.no



FROM AIRPORT

ROOMS

BEDS

MEETING SPACE

MEETING
CAPACITY

BANQUET

EXHIBITION
M²

PARKING

KSU 15,4
MOL 74,5

11

42

Private

VISIT
NORTHWEST



A part of
Fjord
Norway



Thon Hotel Kristiansund

Seaside comfort in historic Kristiansund

Modern and fresh hotel with great location by the sea in the older part of Kristiansund. Tasty and charming decorated rooms, where most of them have seafront view. Meeting and conference facilities for up to 280 persons. Restaurant with view to the center of Kristiansund, free parking in front of the hotel.



[Read more](#)

Contact: kristiansund.resepsjon@thonhotels.no

FROM AIRPORT	ROOMS	BEDS	MEETING SPACE	MEETING CAPACITY	BANQUET	EXHIBITION M²	PARKING
KSU 6 km	100	-	-	-	-	TBA	Private





Scandic Kristiansund

Scandic Kristiansund is perfectly situated by the harbor in the city center, making it an ideal base for exploring Kristiansund and nearby attractions.

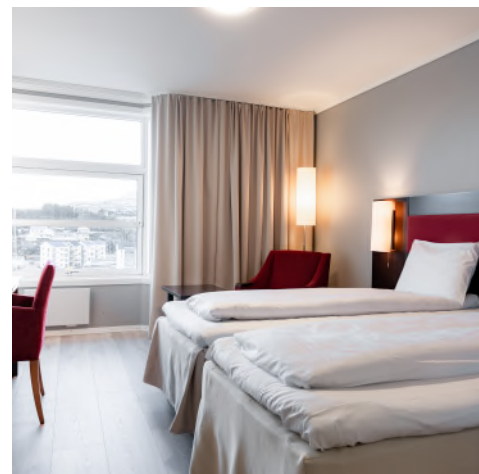
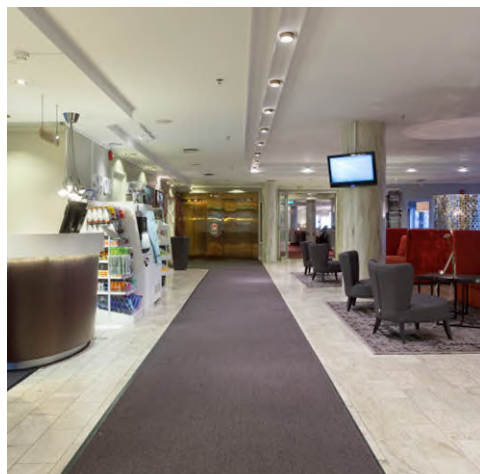
The hotel is a 30-minute drive from the Atlantic Road, with opportunities to visit Kvernes Stave Church and Bergtatt marble mines along the way.

Discover Kristiansund

Experience the city's colorful character, the Sundbåten ferry, Sherpa stairs with panoramic views, and a boat trip to the historic island of Grip.

[Read More](#)

Contact: kristiansund@scandichotels.com



FROM AIRPORT	ROOMS	BEDS	MEETING SPACE	MEETING CAPACITY	BANQUET	EXHIBITION M²	PARKING
KSU 6 km	102	-	5	-	-	TBA	Public





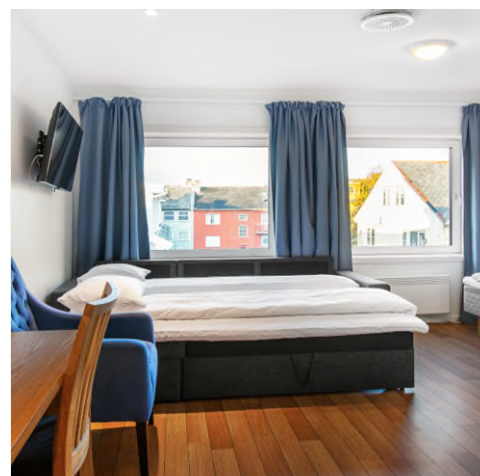
Comfort Hotel Fosna

Modern comfort in the heart of Kristiansund

Comfort Hotel Fosna offers a central location with easy access to shopping and attractions, as well as convenient parking right outside. The hotel features 60 newly renovated, bright rooms equipped with iPod docking stations and flat-screen PCs. Guests can unwind with a drink at the lobby bar or enjoy stunning harbor views from the terrace.

[Read more](#)

Contact: co.fosna@choice.no



FROM AIRPORT	ROOMS	BEDS	MEETING SPACE	MEETING CAPACITY	BANQUET	EXHIBITION M²	PARKING
KSU 7 km	9	30	-	-	-	TBA	Public





Thon Hotel Storgata

Comfort and convenience in the heart of Kristiansund

Thon Hotel Storgata is centrally located in the vibrant harbor area of Kristiansund, making it an ideal base for exploring the town. The hotel features 51 comfortable rooms, some offering excellent views of the surrounding area.

Guests are greeted with a warm, welcoming atmosphere and can enjoy a delightful start to their day with a generous buffet breakfast.

[Read more](#)

Contact: storgata@olavthon.no



FROM AIRPORT

KSU
5 km

ROOMS

54

BEDS

-

MEETING SPACE

-

MEETING
CAPACITY

-

BANQUET

-

EXHIBITION
M²

TBA

PARKING

Public

VISIT
NORTHWEST



A part of
Fjord
Norway



Angvik Gamle Handelssted

by Classic Norway Hotels

Experience Angvik Gamle Handelssted - An exclusive small hotel with a homely atmosphere by the Tingvollfjord, located between Molde and Kristiansund.

The hotel offers a perfect balance between exclusivity and a casual homely atmosphere.

Rooting back to the 16th century

Angvik Gamle Handelssted has roots dating back to the 16th century when Dutch sailing ships anchored in the bay to buy timber. They started a tradition of taking care of the travellers. At the end of the 19th century, this included steamship quays, trade, and barrel production. Eventually, the place became a hub for transportation.

[Read more](#)

Contact: post@angvik-hotell.no



FROM AIRPORT	ROOMS	BEDS	MEETING SPACE	MEETING CAPACITY	BANQUET	EXHIBITION M²	PARKING
MOL 50 km	37	-	5	140	-	TBA	Private



Finnøy Bryggehotell

by Classic Norway

We want Valldal Fjord Lodge to be an informal lodge where you can recharge your batteries for several days.

Find peace and recharge at Valldal Fjord Lodge. Valldal and its surroundings offer a wealth of activities to enjoy. While Valldal is perhaps best known for its delicious and fresh strawberries, it's also a hotspot for adventure. You can try everything from canyoning, climbing parks, kayaking, to hiking.

It's also a short distance to stunning locations such as Tafjordfjella, the Sunnmøre Alps, Geiranger, Trollstigen, Åndalsnes, and Ålesund.

[Read more](#)

Contact: valldal@fjordlodge.no



FROM AIRPORT	ROOMS	BEDS	MEETING SPACE	MEETING CAPACITY	BANQUET	EXHIBITION M²	PARKING
AES 80 km	50	-	3	12-100		TBA	Privat



Ona Havstuer

by Classic Norway

Welcome to Ona Havstuer - the fishing village with the ocean as its nearest neighbour! Ona is one of Norway's most famous fishing villages, located in the outer reaches of the fjord in the municipality of Sandøy, to the west of Molde. With the ocean as its closest neighbour, Ona is able to offer abundant opportunities for adventures or for anyone who simply wants a bit of peace and quiet.

[Read More](#)

Contact: post@havstuene.no



FROM AIRPORT

MOL
54 km

ROOMS

9

BEDS

-

MEETING SPACE

-

MEETING
CAPACITY

-

BANQUET

-

EXHIBITION
M²

TBA

PARKING

Private





Ringholmen

accommodation at Tustna

A coastal escape near Kristiansund

Ringholmen Island is a picturesque getaway just 25 minutes by ferry from Kristiansund, followed by a quick 5-minute boat ride to the island. Open during spring, summer, and autumn, it offers the perfect mix of relaxation and adventure.

Accommodation

Stay in comfortable double rooms or three-bedroom accommodations, suitable for 1–3 guests. Many rooms feature stunning ocean views and include private bathrooms with showers.

Dining and events

Enjoy delicious meals at the on-site restaurant, which is also ideal for meetings and group gatherings.



FROM AIRPORT	ROOMS	BEDS	MEETING SPACE	MEETING CAPACITY	BANQUET	EXHIBITION M²	PARKING
KSU 50 km	-	-	-	-	-	TBA	Private

[Read more](#)

Contact: post@ringholmen.no



A part of
Fjord
Norway



Philipshaugen Lodge

A historic retreat in Øksendal

Phillipshaugen Lodge is situated at the foot of Øksendal's majestic mountains, offering a unique and peaceful accommodation. It's an ideal starting point for skiing and hiking adventures, set in a location surrounded by stunning nature.

A Historic Lodge from 1899

The lodge, built in 1899 by the Englishman Ethelbert Lort-Phillips, is a stately building full of history. Guests can enjoy a classic atmosphere in the living rooms, featuring Chesterfield furniture and fireplaces that create a cozy and historic ambiance.

[Read more](#)

Contact: booking@phillipshaugen.no



FROM AIRPORT	ROOMS	BEDS	MEETING SPACE	MEETING CAPACITY	BANQUET	EXHIBITION M²	PARKING
MOL 80 km	10	20	-	-	-	TBA	Private



Todalshytta

A historic gateway to Trollheimen

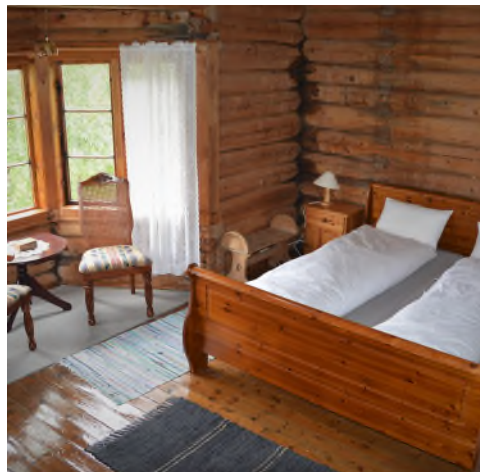
Todalshytta, built in 1901, is a charming and historic cabin in Todalen, perfect for hiking in Trollheimen and fishing in the salmon-rich Toåa river. With 13 cozy rooms accommodating up to 24 guests, the cabin combines traditional character with modern comfort.

Open from June to September, Todalshytta features shared facilities, a fireplace lounge, and a dining area. Guests can enjoy breathtaking hikes, like the Bjøråskaret route to Innerdalen, or relax with exceptional fishing right by the cabin.

For simpler stays, DNT members can access Tourist Association lodgings year-round with a DNT key.

[Read more](#)

Contact: arve@todalshytta.no



FROM AIRPORT	ROOMS	BEDS	MEETING SPACE	MEETING CAPACITY	BANQUET	EXHIBITION M²	PARKING
KSU 75 km	13	24	-	-	-	TBA	Private





Thon Hotel Surnadal

Your gateway to adventure and relaxation

Nestled in the stunning surroundings of Surnadal, Thon Hotel Surnadal is the perfect base for exploring nature and enjoying outdoor activities year-round. Located between Kristiansund and Trondheim, the hotel offers easy access to Trollheimen, Fjodruta, and countless marked and unmarked trails.

With options ranging from cozy single rooms to spacious family rooms and suites, the hotel caters to both vacationers and conference guests. Nearby, discover local shops, dining, and cultural attractions – or unwind in the serene beauty of Svinviks Arboret.

Whether hiking, cycling, skiing, or fishing, Thon Hotel Surnadal offers the ideal balance of adventure and tranquility.



[Read more](#)

Contact: surnadal.resepsjon@olavthon.no

FROM AIRPORT	ROOMS	BEDS	MEETING SPACE	MEETING CAPACITY	BANQUET	EXHIBITION M²	PARKING
KSU 85 km	70	-	10	300	-	TBA	Private



Trædal Hotel & Tourist Center

Welcome to Trædal Hotel and Tourist Centre

Nestled just outside the charming town of Sunndalsøra, Trædal Hotel and Tourist Centre offers breathtaking views of the stunning Sunndalsfjord and the majestic mountains of Litldalen.

We provide a variety of accommodation options, including hotel rooms, apartments, a youth hostel, cabins, and a spacious camping area. Our modern hotel facility, opened in January 2002, is complemented by the historic Lort Phillips House from 1896, which serves as a cozy restaurant and reception venue.

Explore the beauty of the Sunndal region with its rich attractions and exciting activities. Partnering with local guides and Contrast Adventure, we ensure our guests experience the unique charm of Sunndal's nature and culture.

Discover the perfect blend of comfort, history, and adventure at Trædal Hotel and Tourist Centre!

[Read more](#)

Contact: post@tredal.com



FROM AIRPORT	ROOMS	BEDS	MEETING SPACE	MEETING CAPACITY	BANQUET	EXHIBITION M²	PARKING
MOL 85 km	30	-	-	-	-	TBA	Private



Havkroa Hotel

Veiholmen, Smøla

This small hotel offers 5 newly renovated rooms, all with a shower and toilet. Four of the rooms also come with a kitchenette.

Havkroa has a restaurant and bar during the summer. For the rest of the year, you can purchase homemade food via the Trust Shop, a self-service solution. It is very popular among both locals and visitors to the fishing village.



[Read more](#)

Contact: post@havkroa.no

FROM AIRPORT	ROOMS	BEDS	MEETING SPACE	MEETING CAPACITY	BANQUET	EXHIBITION M²	PARKING
KSU 74 km	5	-	3	-	-	TBA	Private



Veiholmen Brygge Hotel

The hotel has large double rooms with a terrace and view. The entire building was significantly upgraded in 2019 with 4 suites with a amazing view.

Veiholmen brygge has a glazed breakfast and lunch restaurant with morning sun and outdoor seating. The hotel also has a restaurant with an exciting menu and a bar. The restaurant "Vågar" has a good à la carte menu. In spring and summer, the restaurant is open every day and the rest of the year the restaurant is open for groups and certain other weekends.

[Read more](#)

Contact: post@veiholmenbrygge.no



FROM AIRPORT

KSU
70 km

ROOMS

7

BEDS

-

MEETING SPACE

-

MEETING
CAPACITY

-

BANQUET

-

EXHIBITION
M²

TBA

PARKING

Private

VISIT
NORTHWEST

ÅLESUND
Sunnmøre

A part of
Fjord
Norway